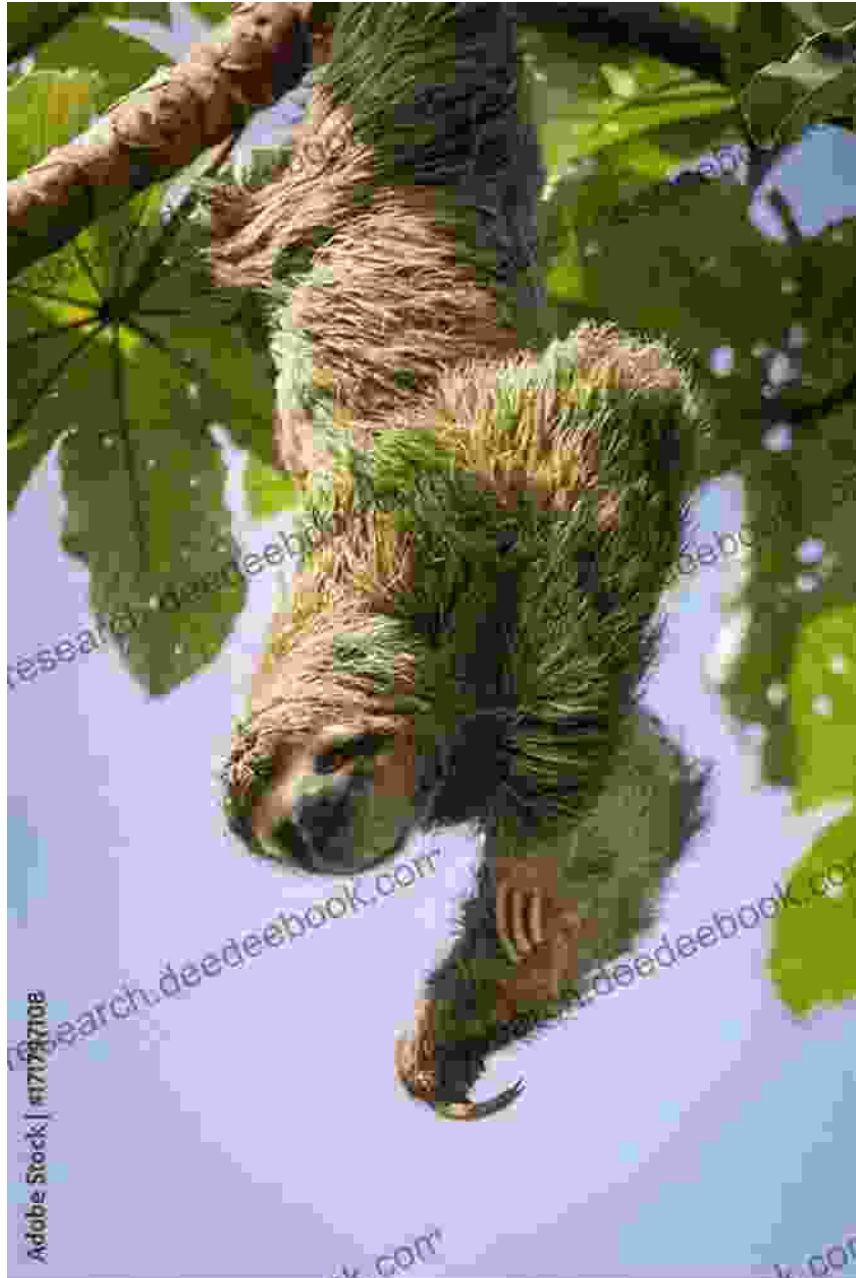


Slow Slow Sloths: Discover the Fascinating World of These Unique Creatures



Sloths, the masters of slow motion, are captivating creatures that have captured the hearts of people worldwide. Their unique adaptations and

adorable quirks make them irresistible to young readers eager to explore the wonders of the natural world.



Slow, Slow Sloths (Penguin Young Readers, Level 2)

by Bonnie Bader

★★★★☆ 4.8 out of 5

Language : English

File size : 61307 KB

Print length : 32 pages

Screen Reader : Supported



Masters of Slow Motion: Delving into the Sloth's Unique Abilities

Sloths are renowned for their incredibly slow movements, which have earned them the title of the slowest mammals in the world. This leisurely pace is a clever adaptation that helps them conserve energy and avoid predators. Their long, sharp claws allow them to hang upside down from tree branches for extended periods, blending seamlessly into their surroundings. Sloths spend most of their lives in the canopy of trees, rarely descending to the forest floor.



Sloths have a unique digestive system that further contributes to their slow lifestyle. Their stomachs are divided into four compartments, and it takes them up to a month to digest a single leaf. This extended digestion process helps them extract maximum nutrients from their plant-based diet.

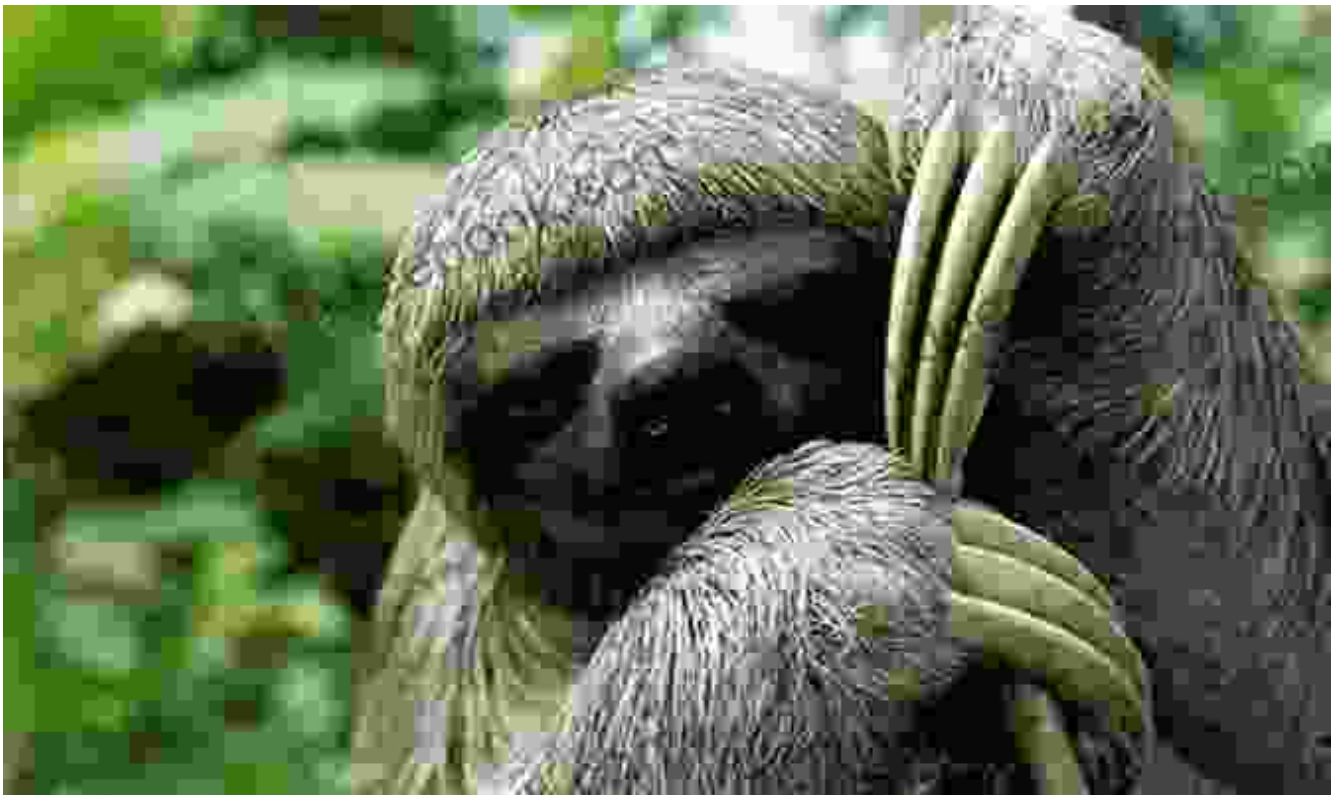
Distinctive Species: Unraveling the Diversity of Sloths

The world of sloths encompasses two distinct families: the two-toed sloths and the three-toed sloths. While they share many similarities, each family exhibits unique characteristics.

- **Two-toed Sloths:** These sloths, as their name suggests, have two toes on each of their hind feet. They are generally larger than three-toed sloths and have a distinctive black mask around their eyes.
- **Three-toed Sloths:** As the name implies, three-toed sloths have three toes on each of their hind feet. They come in a variety of colors, including brown, gray, and even blonde. Three-toed sloths are known for their distinctive vocalizations, which sound like whistles or cries.

Encounters with Predators: Unveiling Sloths' Defense Mechanisms

Despite their slow movements, sloths have developed clever strategies to defend themselves against predators such as jaguars, harpy eagles, and anacondas. Their primary defense mechanism is camouflage. Their long, shaggy fur and slow movements help them blend seamlessly into their surroundings, making them difficult to spot.



If a predator does manage to spot a sloth, the sloth will use its sharp claws to defend itself. They can deliver powerful swipes that can cause serious injuries. Sloths also have a unique ability to play dead, which can trick predators into leaving them alone.

Sloths in the Rainforest: Exploring Their Vital Role in the Ecosystem

Sloths play an essential role in the rainforest ecosystem. As herbivores, they consume vast quantities of leaves, helping to control plant growth. Their slow movements and long hang time disperse seeds throughout the forest, contributing to plant regeneration.

Sloths are also a food source for other animals, such as jaguars and harpy eagles. Their presence in the rainforest helps maintain a delicate balance in the ecosystem.

Preserving the Sloths: Conservation Efforts for a Threatened Species

Unfortunately, sloths face numerous threats to their survival. Habitat loss, deforestation, and hunting all contribute to their declining populations. Conservation efforts are underway to protect these fascinating creatures and their rainforest habitats.

Organizations such as the World Wildlife Fund (WWF) and the Sloth Conservation Foundation are working to raise awareness about the importance of sloths and to implement conservation measures. These efforts include habitat protection, reforestation, and education programs.





Sloths are truly enchanting creatures that embody the wonders of the natural world. Their unique adaptations, adorable quirks, and vital role in the rainforest ecosystem make them fascinating subjects for young readers. By understanding the secrets of slow sloths, we gain a deeper appreciation for the intricate tapestry of life on Earth.

As stewards of the environment, it is our responsibility to protect these gentle giants and ensure their survival for generations to come.

Sloth Fact File

- Average lifespan: 20-30 years
- Average weight: 8-15 pounds
- Average length: 2-3 feet

- Diet: Herbivore (primarily leaves)
- Habitat: Rainforests of Central and South America
- Conservation status: Vulnerable



Slow, Slow Sloths (Penguin Young Readers, Level 2)

by Bonnie Bader

★★★★☆ 4.8 out of 5

Language : English

File size : 61307 KB

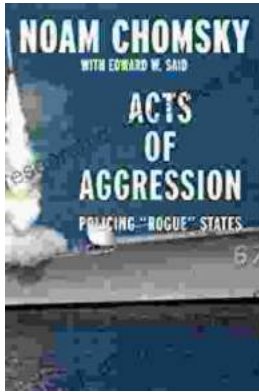
Print length : 32 pages

Screen Reader : Supported



My Little Bible Promises Thomas Nelson

In a world filled with uncertainty and challenges, children need comfort, hope, and inspiration. My Little Bible Promises is a powerful tool that provides young readers with...



Policing Rogue States: Open Media Series Explores Global Security Challenges

In today's interconnected world, the existence of rogue states poses significant threats to global security. These pariah nations often flaunt international...